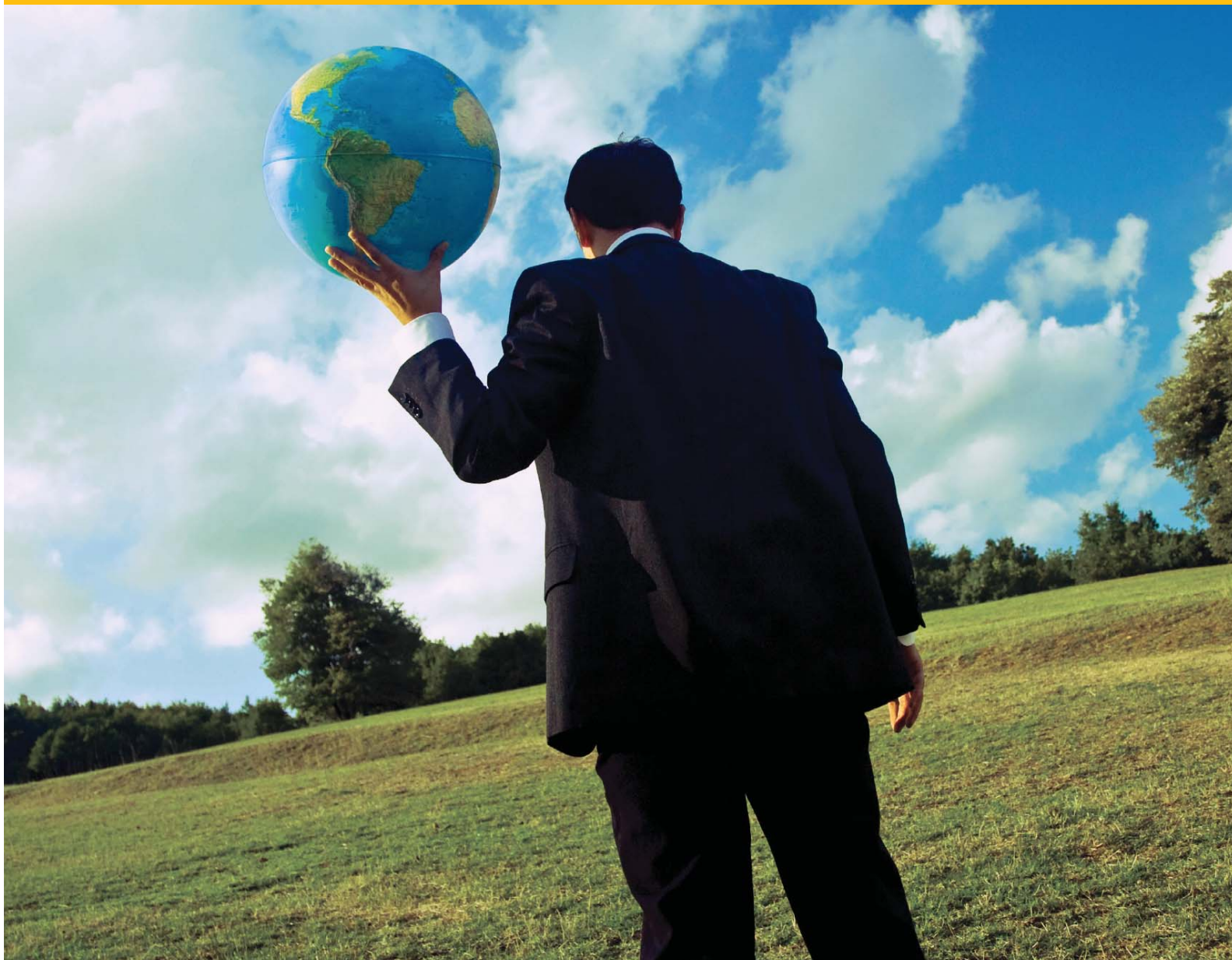


United Kingdom Highlights



Global Leadership Forecast 2011

Jazmine Boatman, Ph.D., Richard S. Wellins, Ph.D., Steve Newhall, and Simon Mitchell

The Talent Management Expert



Revolutionise
leadership,
revolutionise
your business.

To start your leadership revolution
and learn more about DDI's
Global Leadership Forecast 2011,
please visit
www.ddiworld.com/glf2011

ABOUT DEVELOPMENT DIMENSIONS INTERNATIONAL:

For over 40 years, DDI has helped the most successful companies around the world close the gap between where their businesses need to go and the talent required to take them there.

Our areas of expertise span every level, from individual contributors to the executive suite:

- Success Profile Management
- Selection & Assessment
- Leadership & Workforce Development
- Succession Management
- Performance Management

DDI's comprehensive, yet practical approach to talent management starts by ensuring a close connection of our solutions to your business strategies, and ends only when we produce the results you require.

You'll find that DDI is an essential partner wherever you are on your journey to building extraordinary talent.



CONTACT US

EMAIL: INFO.UK@DDIWORLD.COM

WWW.DDIWORLD.COM

TEL: 44.1753.616000

THE AMERICAS

WORLD HEADQUARTERS
PITTSBURGH
412.257.0600
MEXICO CITY
52.55.1253.9000
TORONTO
416.644.8370

EUROPE/AFRICA

DÜSSELDORF
49.2159.91680
LONDON
44.1753.616000
PARIS
33.1.41.96.86.86

ASIA-PACIFIC

MUMBAI
91.22.61911100
SHANGHAI
86.21.6113.2525
SINGAPORE
65.6226.5335
SYDNEY
612.9466.0300

The Talent Management Expert

